

WirelessFiberTM

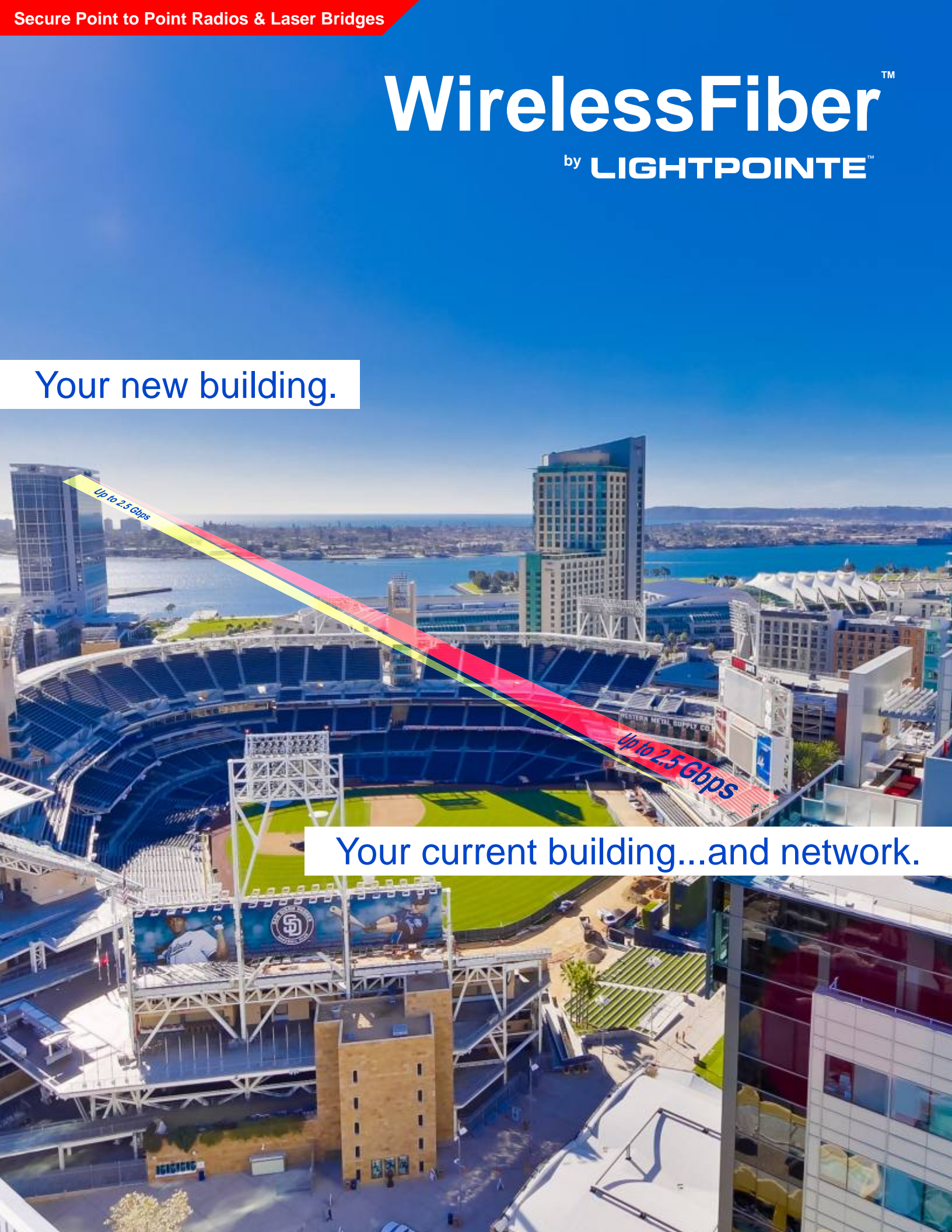
by **LIGHTPOINTETM**

Your new building.

Up to 2.5 Gbps

Up to 2.5 Gbps

Your current building...and network.



Connect two buildings...or an entire city.

(Note: Best viewed in 2-page mode on large monitors)



Hybrid
Radio & Laser
bridge for the
ultimate in speed
& data security

70/80 GHz Radio
bridge for
long distances &
Ultra Low Latency



LightPointe manufactures all three of the leading wireless bridge technologies

- 60 & 70/80 GHz Millimeter Wave Radios
- Patented All-Weather Hybrid Laser-Radios
- 5th-Gen Free Space Optics/Laser Bridges

Since 1998, LightPointe has sold over 16,000 wireless bridge solutions worldwide. We are a pioneer in point-to-point broadband transmission, and this passion for innovation continues to today. In fact, LightPointe was honored when EE Times magazine named Dr. Heinz Willebrand, LightPointe's CEO, to the list of "Forty innovators building the next-gen foundation of the electronics industry."

Whether your organization is a telecom carrier, wireless distributor, or end-user—such as a business, university or government agency—LightPointe has a wireless bridge to suit your budget and performance requirements.

Cut the cord. Cut your monthly IT bill.

60 GHz Radio
Bridge for
license free,
affordable data
transmission



No monthly leased-line cable/fiber fees

Fast & easy installation between buildings

More secure than public networks

Multi-Gigabit transmission capability

Faster than fiber, high performance

60 GHz Radios

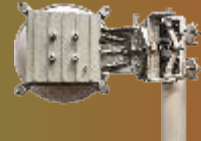
Longest distance 60 GHz bridges in the industry

- Advanced 4.72" (12cm) Lens Antenna, superior to flat antennas
- EIRP: Max 44dBm



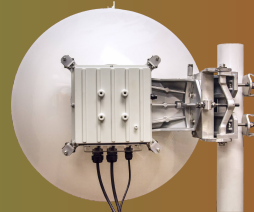
GigE/GbE: Up to 1 Gbps

- 1 foot (30cm)
- EIRP: Max 50dBm



Medium distance GigE/GbE

- 2 foot (60cm)
- Longest range 60 GHz in the industry, and best EIRP (Max 55dBm), compared to competing 42 dBm!

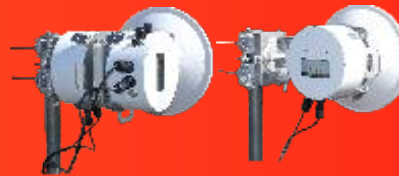


Long distance GigE/GbE

70/80 GHz Radios

Lowest latency 70/80 GHz bridges in the industry

- 1 foot (30cm)
- Highest powered, lowest latency in the industry



Multi-GigE/GbE: Up to 2 Gbps

- 2 foot (60cm)
- Longest distance, highest powered, & lowest latency



Long distance multi-GigE/GbE

Hybrid 5th Gen Laser/RF

Fastest, most secure bridges in the industry

- 1-beam laser & integrated radio bridge
- All weather performance



GigE/GbE: Up to 1 Gbps

- 4-beam laser & integrated radio bridge
- All weather performance
- Automatic tracking



Long distance GigE/GbE

Performance Wireless Bridges

Industry-leading
2-year warranty



Did you know...

- The cost to build a fiber connection to a building averages US\$125 a foot. That's approximately US\$60,000 for 1/10th of a mile. And 60% to 80% of the costs are for trenching and infrastructure repairs.
- LightPointe solutions are 667 to 1,667 times faster than the average enterprise's T1 line.
- Copper leased lines cost \$125 to \$750 per month...forever. In comparison, the ROI on a LightPointe AireLink bridge averages less than two years. Over a ten year period, a typical leased line costs 10 times the cost of a typical LightPointe wireless bridge.
- Typical leased **fiber** OC-3 line (155 Mbps) **monthly rates** are US\$4,000 to US\$7,500, and such connections are 16 times slower than LightPointe's fastest wireless bridges.
- Only 40% of US buildings housing more than 20 employees have access to nearby fiber.
- It takes, on average, 3 to 6 months to bring fiber from a street into a building due to construction, building permits, landlord approvals, etc.
- If your organization uses the internet to connect personnel/LANs, it is exposed to over 3 billion internet users. Watch as they increase: <http://www.internetlivestats.com/watch/internet-users/>
- Global IP traffic increased over fivefold in the past 5 years, according to Cisco.
- Over half of the internet traffic will be from non-PC devices by 2019.
- In 2019, global internet traffic will be 64 times the volume of 2005.
- Netflix video streaming accounts for 36% of downstream internet traffic during peak times.
- The number of significant US data breaches in 2014 was 783, 27% higher than the previous year.
 - Medical/healthcare data breaches: 42%
 - Business data breaches: 33%
 - Government/military: 11.7%

LightPointe Fun Facts:

- A LightPointe wireless bridge plays a prominent role/prop in an episode of *Under the Dome*.
- In 2013, NASA used a 1/2 Watt Free Space Optics bridge to transmit at 600 Mbps 238,000 miles to a spacecraft orbiting the moon, as part of their transition from RF to laser technology.
- A signal transmitted by a LightPointe AireBridge SX or LX travels on a beam moving at over 671 million miles per hour.
- LightPointe, one of the most stable and successful wireless bridge companies, is part of a billion dollar diversified Silicon Valley company, headed by a member of the Forbes list of billionaires. Its mission includes everything from bringing connectivity to the masses...to new battery technologies...to biotech companies developing new cancer drugs.
- LightPointe's revenues doubled last year over the previous year.
- LightPointe has deployed over 16,000 wireless systems.
- Since 1998, LightPointe has invested over \$90 million in the wireless bridge business.
- LightPointe sells more Ultra Low Latency wireless bridges for demanding applications than any other company (e.g., High Speed Trading and other ULL applications).
- LightPointe designs and manufactures all radios and lasers in San Diego, CA, as opposed to most competitors subcontracting manufacturing to non-owned remote factories.
- LightPointe's products are "Green" solutions. The power consumption of a typical LightPointe enterprise wireless transmitter is about the same as three 7 Watt nightlight light bulbs.
- Transmissions between LightPointe links are virtually impossible to eavesdrop on/intercept.



LIGHTPOINTE™

RADIOS & LASER BRIDGES

Leader in Wireless Bridges

11696 Sorento Valley Road, Ste. 101
San Diego, CA 92121 • USA
+1 858-834-4083

Sales@LightPointe.com
www.LightPointe.com

© 2015 LightPointe Communications, Inc. All rights reserved. LightPointe, the LightPointe logo, WirelessFiber, AirBridge, Aire X-Stream, AireLink, & AireBeam are registered trademarks of LightPointe Communications in the USA & certain other countries. Specifications and information are subject to change without notice. Pictures and descriptions of trading are for illustration purposes only. Results will vary due to installation variables. V061015a